

SINGLE PLANE FLANGE SWIVELS - HBS SERIES

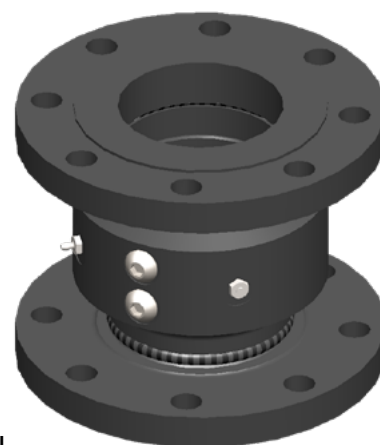
The HBS100xx is a straight single-plane steel swivel (Style 20) with 4" ASME 150 raised face flanged ends.

The HBS100 series swivels use OPWs proven swivel designs and are manufactured to be used as a base swivel on a wide range of loading arms.

The HBS100 is a direct replacement of the LBC4-1 swivel.

Features and Benefits

- Single-plane swivel direction (Style 20) allows for 360° rotation.
- O-Rings provide a tight seal without hindering swivel action.
- Accurately machined and micro-finished grooves provide for minimal seal wear.
- Body and tail sections are locked together by a double row of ball bearings
- Raceways are machined to precise tolerances.
- Double raceway design assures proper alignment and prevents binding caused by temperature changes and heavy radial loads.
- Protective inner O-ring seal prevents product from entering bearing chamber.
- Outer seal keeps rain, dirt, and other contaminants out.
- Ball bearings are hardened, precision-ground steel.
- A grease fitting between races that accepts a standard grease gun is available for swivels that require field lubrication
- Non-lubricating swivels are available on special order.
- Balls are held in place by factory-installed plugs that never need to be adjusted to maintain bearing performance.



HBS100

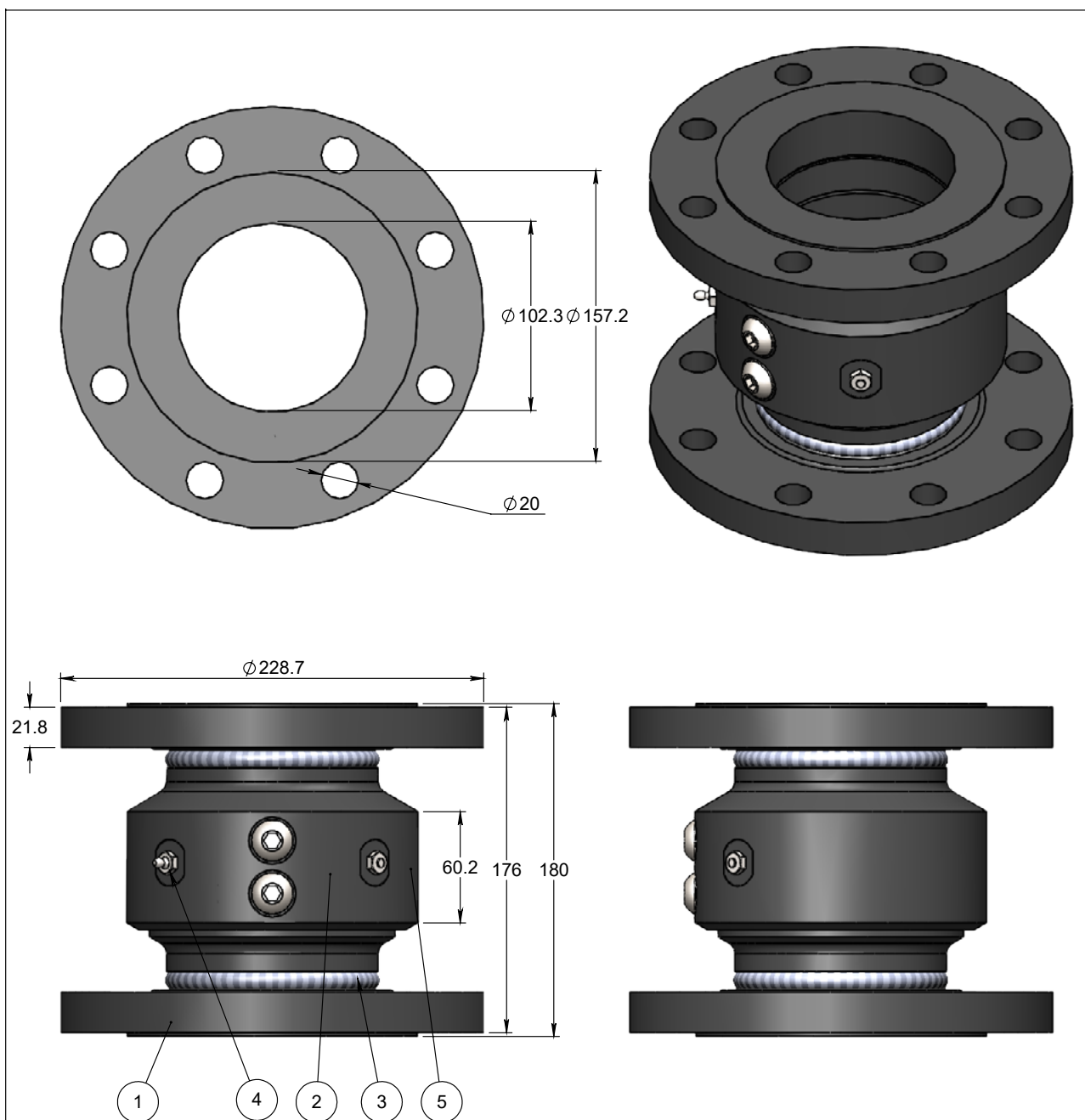
Technical Information

Materials	Mild Steel body with hardened raceways. Viton or PTFE seals.
Design Pressure	1,060 kPa (153 PSI).
Test Pressure	1,600 kPa (232 PSI).
End Connections	4" ASME Class 150 raised face.

Ordering Information

Item	Description
HBS100	4" ASME Class 150 RF Straight Single-plane Swivel M/S, Viton seals.
HBS100-HT	4" ASME Class 150 RF Straight Single-plane Swivel M/S, PTFE seals.
3003K-3400-N940	Swivel Seal Kit to suit HBS100-HT.
H06712M	Ball Bearing to suit HBS100 Series swivels.

SINGLE PLANE FLANGE SWIVELS - HBS SERIES



ITEM NO.	PART NUMBER	DESCRIPTION	HBS100	HBS100-HT	MATERIAL
1	HBS100-1	AMSE Flange	2	2	STEEL
2	3420W-0402	Swivel Bearing Block	1	1	STEEL
3	3003K-3400-N940	4" SEAL KIT - HIGH TEMP	-	1	PFA
4	7121	GREASE STANDARD	1	-	GREASE
	58082	GREASE HI-TEMP	-	1	GREASE
5	PAINT-LBM-GREY	PAINT STANDARD	1	-	PAINT
	PAINT-HI-TEMP	PAINT HI-TEMP	-	1	PAINT